

CAIMIEXPORT

LUXURY HARDWARE

Snello single wall drawer

COMPANY

QUALITY AND EXPERIENCE



Our company was founded in 1964.

In the early years of our activity we dedicated ourselves to the design and production of aluminum components exclusively for some of the most renowned companies in the world of furniture.

close collaboration with important players in the sector and the continuous drive to find original solutions to customer needs have enabled us to acquire distinctive skills in designing, developing and industrializing unique components.

Today we are able to offer a wide range of patented products, designed to make exclusive: wardrobe cabinet, living room, kitchen, bathroom and office furniture.

We search for solutions to guarantee innovative and exclusive products: this is the only way we can improve what we offer our customers and propose solutions that use aluminum in an innovative way.

CAIMI Srl

sede legale: Via Villafranca, 4/23
60122 Ancona (AN) – IT

sede produttiva: Via San Primo, 25
Lurago d'Erba (CO) – IT

sede amministrativa: Via Provinciale, 31
22060 Novedrate (CO) – IT

Cod. Fiscale e P.IVA 08485910965

Cap. Sociale: 15.000,00 int. vers.

R.E.A. Ancona: AN-214329

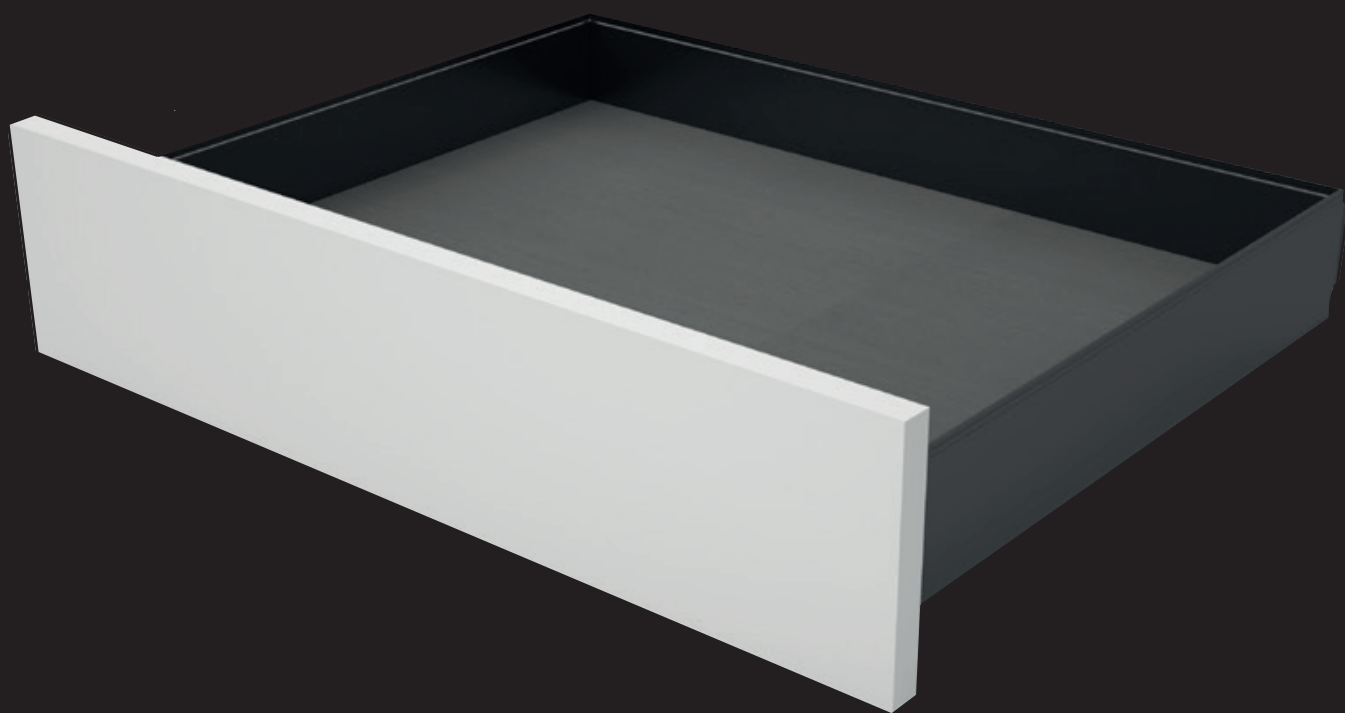
Telefono: +39 031 3510111

Fax: +39 031 3510410

eMail: infocaimi@caimixport.it

PEC: caimisrl@pec.it

CAIMIEXPORT
LUXURY HARDWARE



CAIMIEXPORT
LUXURY HARDWARE

Snello single wall drawer H80

CAIMIEXPORT

LUXURY HARDWARE

Product image



Product description

- Elegant drawer with 1.5mm thickness
- Lengths: 250 - 550mm
- Front fixing bracket with buttonholes horizontal adjust.
- Cam for vertical adjust.
- Colors: white and anthracite
- Cover with customizable logo
- Can be used with different types of slides

Anthracite

Codes	Description
6A250AC	SNELLO DRAWER H80 - 250mm
6A300AC	SNELLO DRAWER H80 - 300mm
6A350AC	SNELLO DRAWER H80 - 350mm
6A400AC	SNELLO DRAWER H80 - 400mm
6A450AC	SNELLO DRAWER H80 - 450mm
6A500AC	SNELLO DRAWER H80 - 500mm
6A550AC	SNELLO DRAWER H80 - 550mm

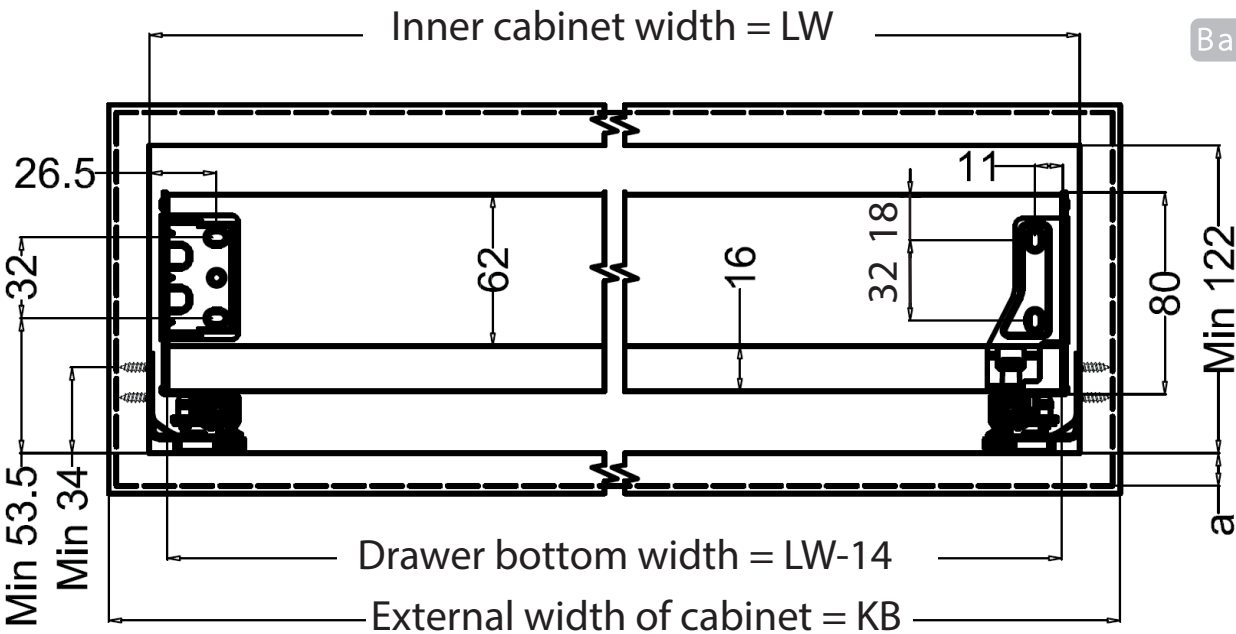
White

Codes	Description
6A250WC	SNELLO DRAWER H80 - 250mm
6A300WC	SNELLO DRAWER H80 - 300mm
6A350WC	SNELLO DRAWER H80 - 350mm
6A400WC	SNELLO DRAWER H80 - 400mm
6A450WC	SNELLO DRAWER H80 - 450mm
6A500WC	SNELLO DRAWER H80 - 500mm
6A550WC	SNELLO DRAWER H80 - 550mm

Dimensions and drillings

Front

Back



Snello single wall drawer H120

Standard version



Product description

- Elegant drawer with 1.5mm thickness
- Lengths: 250 - 550mm
- Front fixing bracket with buttonholes horizontal adjust.
- Cam for vertical adjust.
- Colors: white and anthracite
- Cover with customizable logo
- Can be used with different types of slides

Anthracite

Codes	Description
6B250AC	SNELLO DRAWER H120 - 250mm
6B300AC	SNELLO DRAWER H120 - 300mm
6B350AC	SNELLO DRAWER H120 - 350mm
6B400AC	SNELLO DRAWER H120 - 400mm
6B450AC	SNELLO DRAWER H120 - 450mm
6B500AC	SNELLO DRAWER H120 - 500mm
6B550AC	SNELLO DRAWER H120 - 550mm

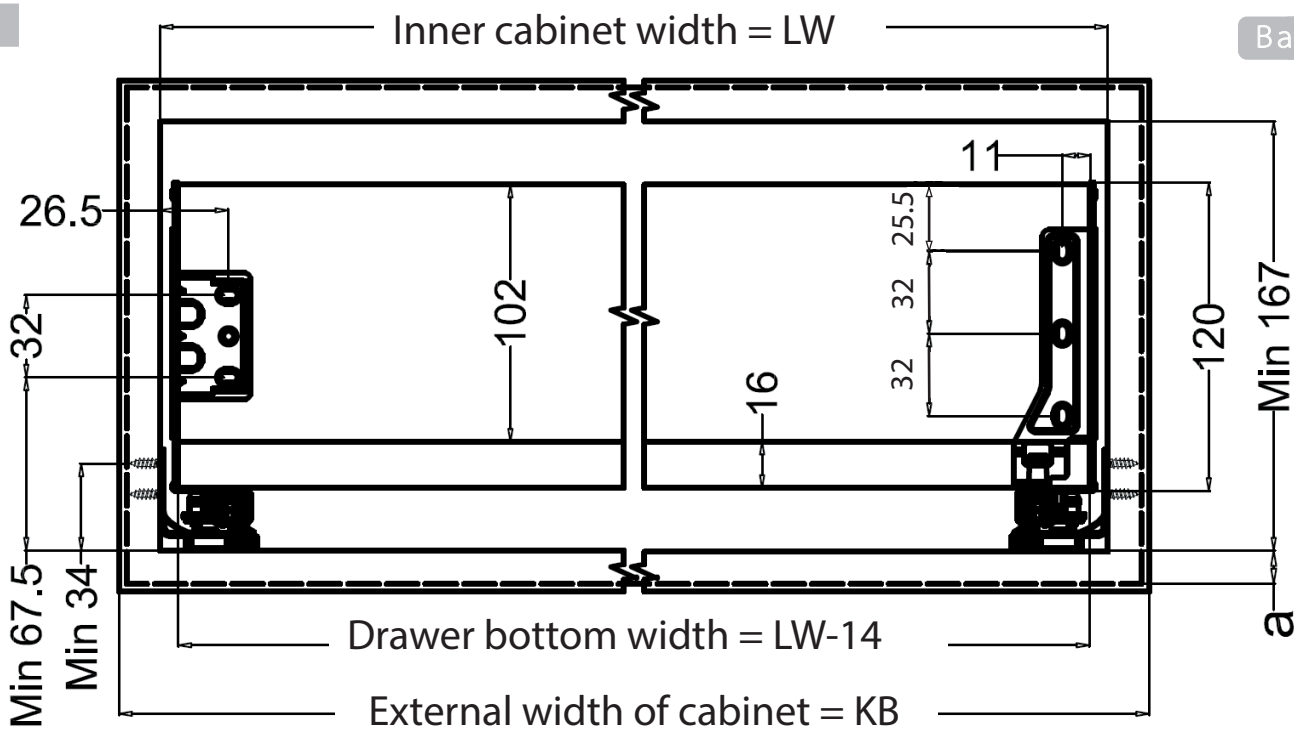
White

Codes	Description
6B250WC	SNELLO DRAWER H120 - 250mm
6B300WC	SNELLO DRAWER H120 - 300mm
6B350WC	SNELLO DRAWER H120 - 350mm
6B400WC	SNELLO DRAWER H120 - 400mm
6B450WC	SNELLO DRAWER H120 - 450mm
6B500WC	SNELLO DRAWER H120 - 500mm
6B550WC	SNELLO DRAWER H120 - 550mm

Dimensions and drillings

Front

Back



Snello single wall drawer H150

Standard version

Product description



- Elegant drawer with 1.5mm thickness
- Lengths: 250 - 550mm
- Front fixing bracket with buttonholes horizontal adjust.
- Cam for vertical adjust.
- Colors: white and anthracite
- Cover with customizable logo
- Can be used with different types of slides

Anthracite

Codes	Description
6C250AC	SNELLO DRAWER H150 - 250mm
6C300AC	SNELLO DRAWER H150 - 300mm
6C350AC	SNELLO DRAWER H150 - 350mm
6C400AC	SNELLO DRAWER H150 - 400mm
6C450AC	SNELLO DRAWER H150 - 450mm
6C500AC	SNELLO DRAWER H150 - 500mm
6C550AC	SNELLO DRAWER H150 - 550mm

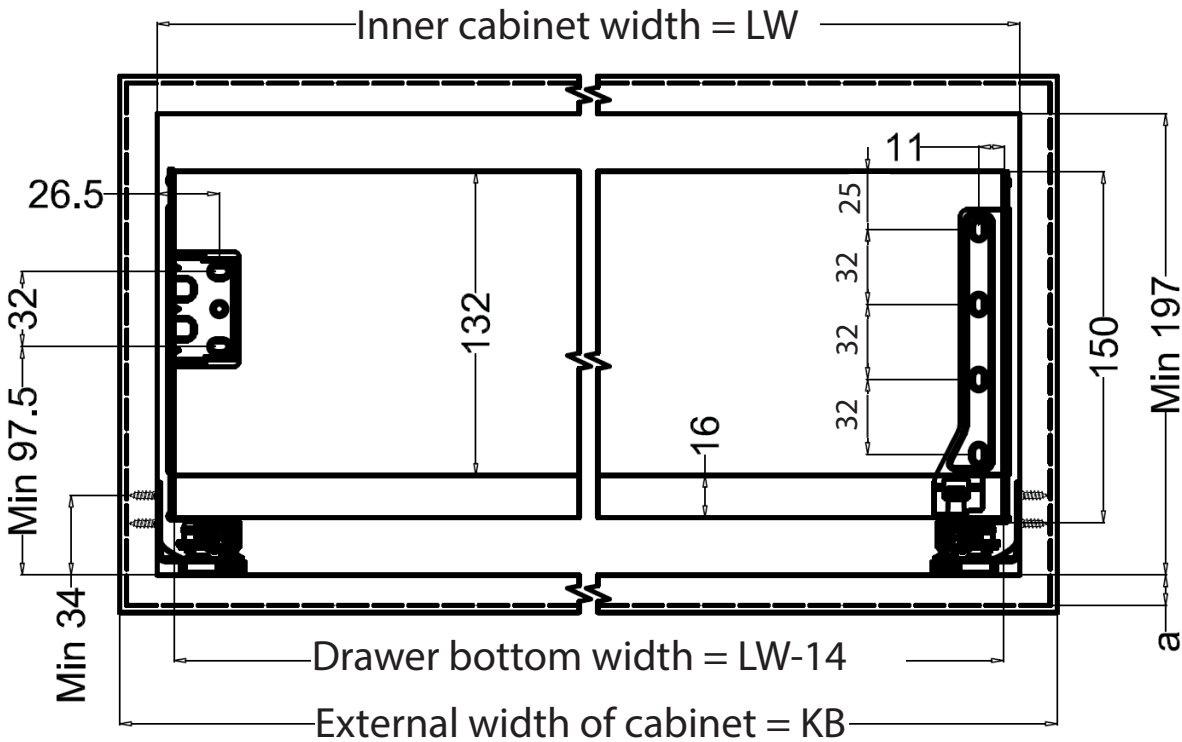
White

Codes	Description
6C250WC	SNELLO DRAWER H150 - 250mm
6C300WC	SNELLO DRAWER H150 - 300mm
6C350WC	SNELLO DRAWER H150 - 350mm
6C400WC	SNELLO DRAWER H150 - 400mm
6C450WC	SNELLO DRAWER H150 - 450mm
6C500WC	SNELLO DRAWER H150 - 500mm
6C550WC	SNELLO DRAWER H150 - 550mm

Dimensions and drillings

Front

Back



Snello single wall drawer H200

CAIMIEXPORT

LUXURY HARDWARE

Standard version



Product description

- Elegant drawer with 1.5mm thickness
- Lengths: 250 - 550mm
- Front fixing bracket with buttonholes horizontal adjust.
- Cam for vertical adjust.
- Colors: white and anthracite
- Cover with customizable logo
- Can be used with different types of slides

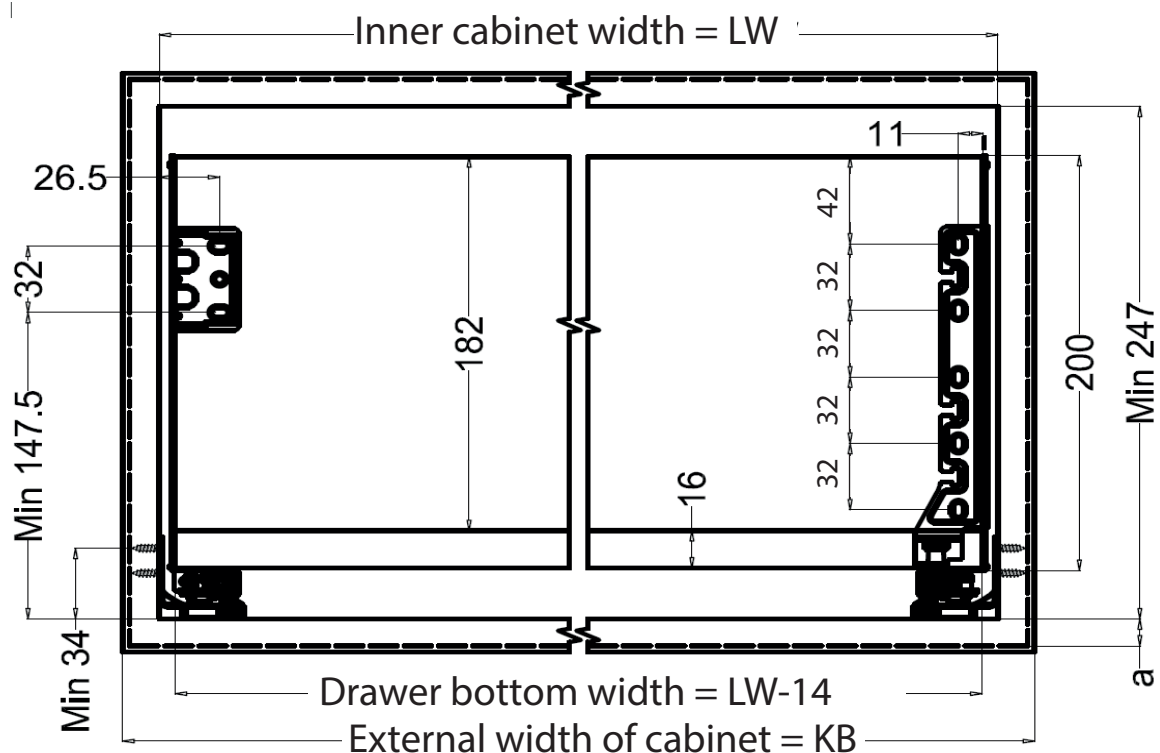
Anthracite

Codes	Description
6D250AC	SNELLO DRAWER H200 - 250mm
6D300AC	SNELLO DRAWER H200 - 300mm
6D350AC	SNELLO DRAWER H200 - 350mm
6D400AC	SNELLO DRAWER H200 - 400mm
6D450AC	SNELLO DRAWER H200 - 450mm
6D500AC	SNELLO DRAWER H200 - 500mm
6D550AC	SNELLO DRAWER H200 - 550mm

White

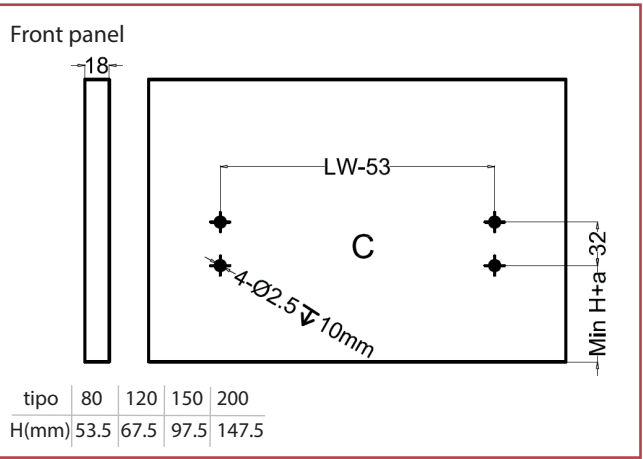
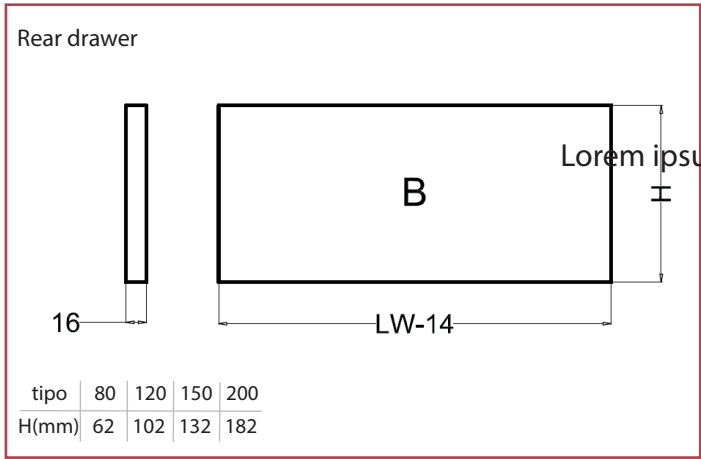
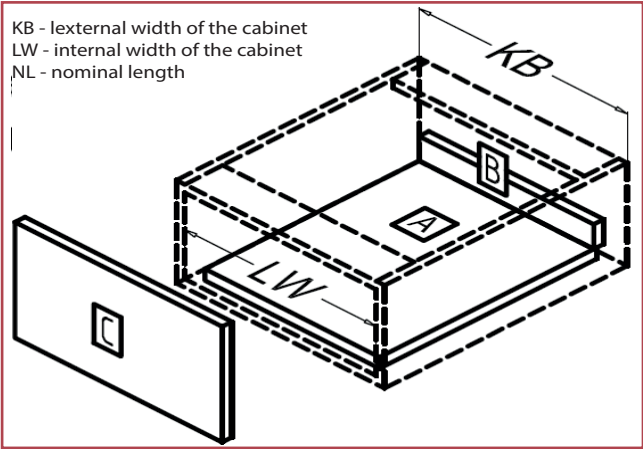
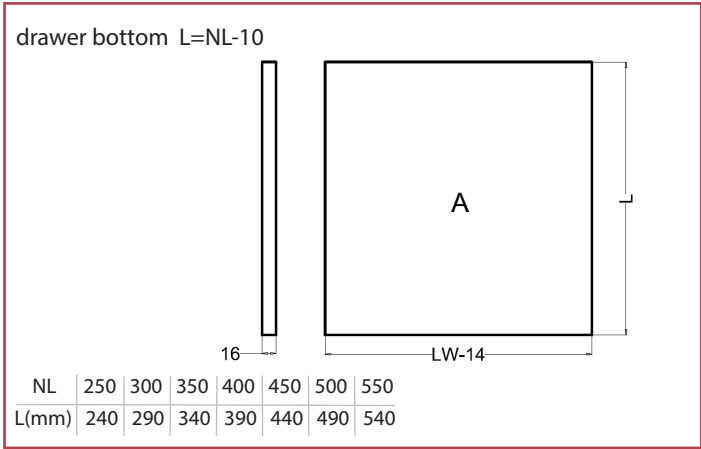
Codes	Description
6D250WC	SNELLO DRAWER H200 - 250mm
6D300WC	SNELLO DRAWER H200 - 300mm
6D350WC	SNELLO DRAWER H200 - 350mm
6D400WC	SNELLO DRAWER H200 - 400mm
6D450WC	SNELLO DRAWER H200 - 450mm
6D500WC	SNELLO DRAWER H200 - 500mm
6D550WC	SNELLO DRAWER H200 - 550mm

Dimensions and drillings



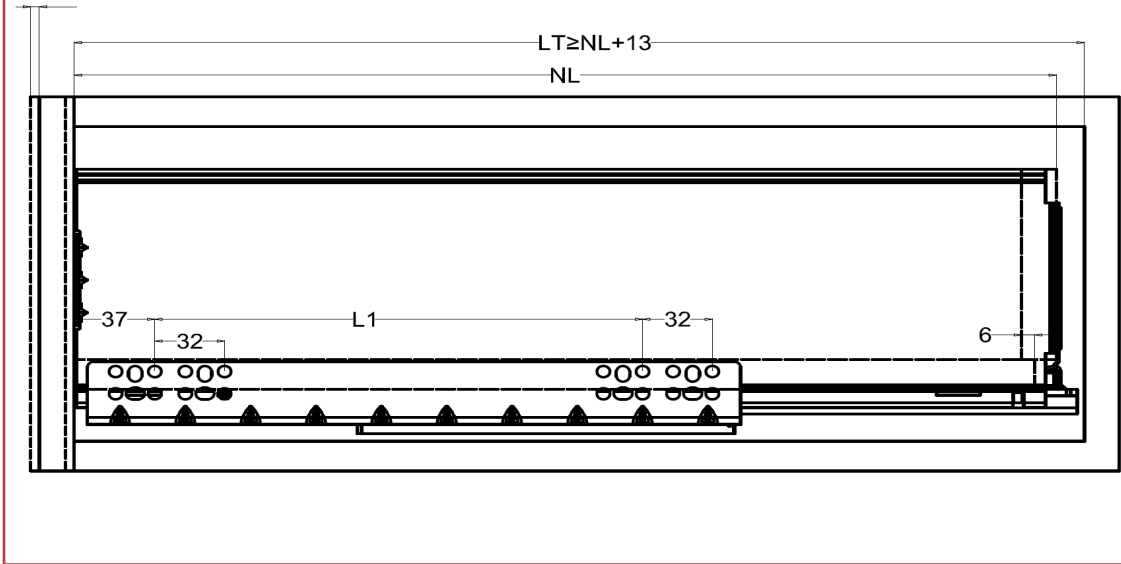
Snello single wall drawer

Panels size



Furniture dimensions and guide fixing

NL= nominal length of guides
LT= internal depth of the cabinet



NL	LT _(min)	L1
250	263	128
300	313	128
350	363	160
400	413	192
450	463	224
500	513	256
550	563	288

General packaging information

Lenght (mm)	set./box	Box weight (Kg)	Box dimension (cm)	box / tier	n° tiers	box/pallet	box weight (Kg)	Pallet dimention (cm)
H88-250	6	3,62	28* 24* 11	12	7	84	325	110* 80* 92
H88-300	6	4,22	33* 24* 11	9	7	63	287	110* 80* 92
H88-350	6	4,82	38* 24* 11	8	7	56	291	110* 80* 92
H88-400	6	5,36	43* 24* 11	7	7	49	284	110* 80* 92
H88-450	6	5,96	48* 24* 11	6	7	42	271	110* 80* 92
H88-500	6	6,56	53* 24* 11	6	7	42	297	110* 80* 92
H120-550	6	4,82	28* 24* 15	12	5	60	310	110* 80* 90
H120-600	6	5,66	33* 24* 15	9	5	45	276	110* 80* 90
H120-650	6	6,56	38* 16* 15	8	5	40	283	110* 80* 90
H120-700	6	7,34	43* 16* 15	7	5	35	278	110* 80* 90
H120-750	6	8,12	48* 16* 15	6	5	30	265	110* 80* 90
H120-800	6	8,9	53* 16* 15	6	5	30	288	110* 80* 90
H150-850	6	5,24	28* 16* 18	12	4	48	273	110* 80* 87
H150-900	6	6,38	33* 16* 18	9	4	36	251	110* 80* 87
H150-250	6	7,58	38* 21* 18	8	4	32	264	110* 80* 87
H150-300	6	8,66	43* 21* 18	7	4	28	263	110* 80* 87
H150-350	6	9,86	48* 21* 18	6	4	24	258	110* 80* 87
H150-400	6	11,06	53* 21* 18	6	4	24	286	110* 80* 87
H200-450	6	6,26	28* 21* 23	12	3	36	246	110* 80* 84
H200-500	6	7,7	33* 21* 23	9	3	27	229	110* 80* 84
H200-550	6	9,26	38* 21* 23	8	3	24	243	110* 80* 84
H200-600	6	10,64	43* 21* 23	7	3	21	244	110* 80* 84
H200-650	6	12,02	48* 18* 23	6	3	18	237	110* 80* 84
H200-700	6	13,7	53* 18* 23	6	3	18	268	110* 80* 84

CAIMIEXPORT

LUXURY HARDWARE



CAIMI Srl

Registered office: Via Villafranca, 4/23

60122 Ancona (AN) – IT

Production site: Via San Primo, 25

Lurago d'Erba (CO) – IT

Administrative headquarters: Via Provinciale, 31

22060 Novedrate (CO) – IT

Cod. Fiscale e P.IVA 08485910965

Cap. Sociale: 15.000,00 int. vers.

R.E.A. Ancona: AN-214329

Phone: +39 031 3510111

Fax: +39 031 3510410

eMail: infocaimi@caimiexport.it

PEC: caimisrl@pec.it

